

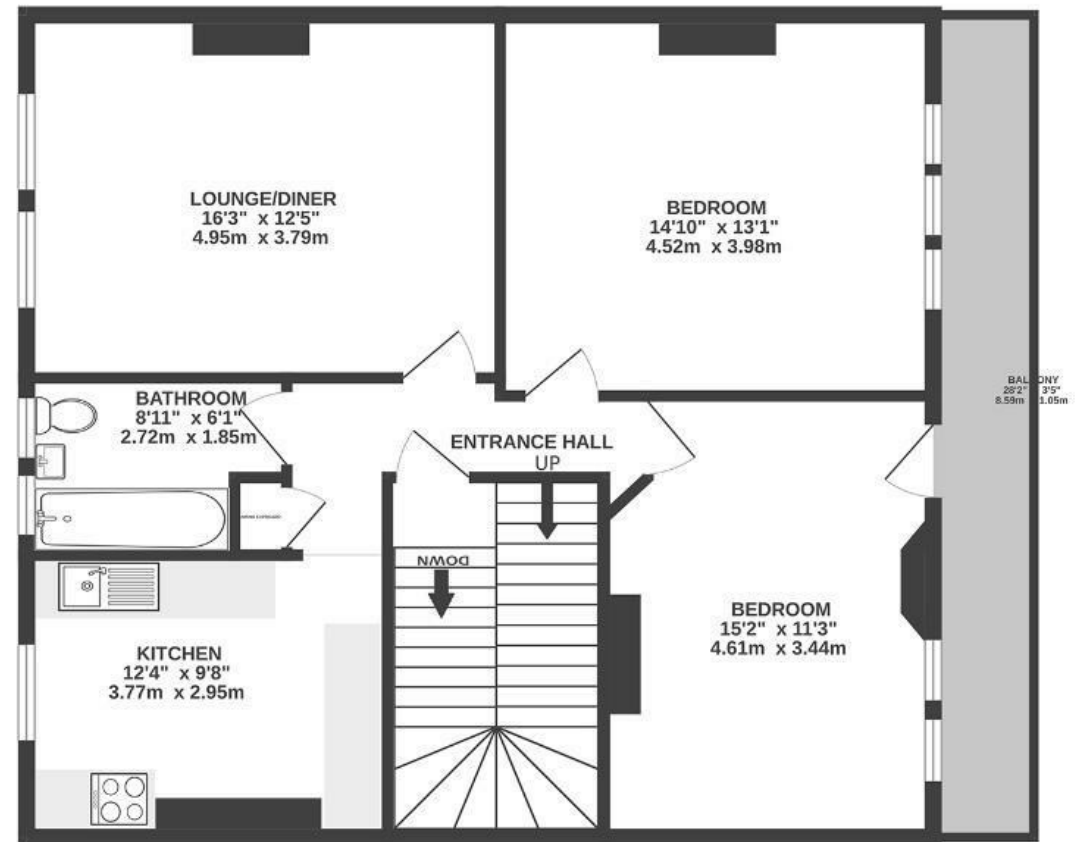
# Coldharbour Road

## REDLAND

APPROXIMATE FLOOR AREA  
79.4 SQM / 854 SQFT



FIRST FLOOR



Boardwalk

# Coldharbour , BRISTOL



£425,000



BS6 7SB



2 Bedrooms



1 Bathrooms

"We have really enjoyed calling this flat home. In the mornings, the light floods into the living room and you can look out on the rolling green hills at the edge of the city. Weekends often look like a walk on the downs followed by a pastry at Littleshop & Pantry. As soon as we walked in, we were drawn to the character fireplaces and high ceilings but more than anything, we have loved the sense of peace in this flat and the chance to host and share time with friends."

